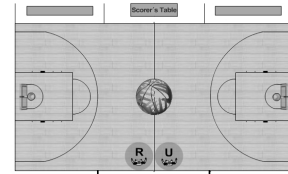


FIBA RULE CHANGES 2010

Prepared by
Paul Deshaies
CABO National Interpreter

Art. 2 - COURT

- 3-pt area : line at 6,75 meters
- Rectangular restricted area (4,9 X 5,8 m)
- No-charge semi-circle (1,25m)
- Throw-in line : at sideline, 8,325 m from endline, opposite scorer's table



Art. 4.4.2 - EQUIPMENT

- Compression sleeves and stockings permitted - Recommended - same colour as shirt/shorts

Art. 8.6 - INTERVAL OF PLAY

- Ends when ball is tossed or ball at disposal of thrower-in

INTERVAL OF PLAY

- Question 1:
 - At the beginning of the game, the referee enters the circle to administer the jump ball between jumpers A1 and B1. (a) Before the ball is tossed by the referee, (b) after the ball is tossed, but before it is legally tapped, (c) after the ball is legally tapped, B2 pushes A2. The official charges B2 with a personal foul. Is this correct?
 - Answer: No in (a); yes in (b) and (c).

Art. 10.2 - STATUS OF THE BALL

- On the jump ball, live ball when ball leaves hands of referee

Art. 16.2.5 - LAST SECOND SHOT

- The game clock must indicate 0:00.3 (three tenths of a second) or more for a player to secure control of the ball on a throw-in or on a rebound after the last or only free throw in order to attempt a shot for a field goal.
- If the game clock indicates 0:00.2 or 0:00.1, the only type of a valid field goal made is by tapping or directly dunking the ball.

LAST SECOND SHOT

- Question 2:
 - With 0:00.2 second left on the game clock, A2 secures control of A1's throw-in pass and releases a try for goal before the buzzer sounds to end the quarter. While the ball is in the air, the buzzer sounds and then the ball enters the basket. Shall the basket count?
 - Answer: No.

LAST SECOND SHOT

- Question 3:
 - With 0:00.2 second left on the game clock, A2 taps A1's throw-in pass toward the basket. While the ball is in the air, the buzzer sounds and then the ball enters the basket. Shall the basket count?
 - Answer: Yes.

Art. 17 – THROW-IN

- On a throw-in the following situations may occur:
 - (a) The ball is passed over the basket and it is touched by a player of either team by reaching through the basket from below.
 - (b) The ball lodges between the ring and the backboard.
 - (c) The ball is thrown at the ring in order to reset the twenty-four (24) second clock.

At. 17 – THROW-IN

- **Example a:**
 - On a throw-in A4 passes the ball over the basket when it is touched by a player of either team by reaching through the basket from below.
- **Interpretation:**
 - This is an interference violation. The game is resumed with a throw-in for the opponents at the freethrow line extended. In case the defensive team commits the violation, no points can be scored by
 - an offensive team as the ball did not come from the inbounds area of the playing court.

At. 17 – THROW-IN

- **Example b:**
 - Thrower-in A4 passes the ball towards the basket and it lodges between the ring and the backboard.
- **Interpretation:**
 - This is a jump ball situation. The game is resumed by applying the alternating possession
 - procedure. If team A is entitled to the throw-in the twenty-four (24) second clock shall not be reset.

Art. 17/29 – Throw-in/24 Seconds

■ Example c:

- With five (5) seconds remaining on the twenty-four (24) second clock during the throw-in A4 passes the ball towards the basket where it touches the ring.

Interpretation:

- The twenty-four (24) second operator shall not reset the shot clock as the game clock did not start yet.

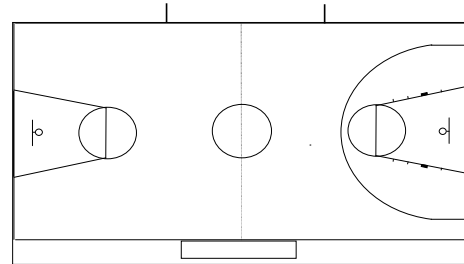
Art. 17 – Throw in

- A1 is the frontcourt dribbling towards the basket in the restricted area and is fouled by B2 just prior to gathering the ball to shoot. A1 continues and puts the ball in the basket. This is team B's 3rd foul of the quarter. The referee disallows the basket and awards the ball to team A on the endline. Is this correct?
- No. New FIBA interpretation (All Violations or Fouls that are followed by a disallowed basket shall be put in play on the sideline – free throw line extended)

Art. 17.2.4 - LAST 2 MINUTES

- During the last two (2) minutes of the fourth quarter and during the last two (2) minutes of each extra period, following a time-out taken by the team that is entitled to possession of the ball from its backcourt the throw-in shall be administered at the throw-in line opposite the scorer's table in the team's frontcourt.

FRONT COURT THROW-IN LINE



LAST 2 MINUTES

- In the last minute of the game, A4 is dribbling in his backcourt when a team B player taps the ball out-of-bounds at the free-throw line extended.
- (a) A time-out is granted to team B.
- (b) A time-out is granted to team A.
- (c) A time-out is granted first to team B and immediately after to team A (or vice-versa).
- Interpretation:
- In (a), the game resumes with a team A throw-in from the free-throw line extended.
- In (b) and (c), the game shall resume with a team A throw-in from the throw-in line in team A's frontcourt, opposite the scorer's table.

LAST 2 MINUTES

■ Question 4:

- With 1:45 left to play in the fourth quarter, B1 commits an unsportsmanlike foul on A1 who is dribbling the ball in Team A's backcourt. Team A is granted a time-out. (a) After the two free throws awarded to A1, shall the Team A throw-in be taken at mid-court, straddling the line? (b) Shall the shot clock be reset to 24?
- Answer: YES in (a) and (b) (New FIBA Interpretation).

Art. 28.1.1 - 8-SECOND RULE

- Whenever: On a throw-in, the ball touches or is legally touched by any player in the backcourt and the team of that player taking the throw-in remains in control of the ball in its backcourt, that team must cause the ball to go into its frontcourt within eight (8) seconds.

8-SECOND RULE

- Question 5:
 - A1's throw-in pass from Team A's back court is touched but not controlled by A2 and the ball bounces freely on the floor. Shall the official start an 8-second count immediately?
 - Answer: Yes.

8-SECOND RULE

- Question 6:
 - A1's throw-in pass from Team A's backcourt is deflected by B1 and the ball bounces freely on the floor. Shall the official start an 8-second count immediately?
 - Answer: Yes.

8-SECOND RULE

- Question 7:
 - A1's throw-in pass from Team A's backcourt touches an official and the ball bounces freely on the floor. Shall the official start an 8-second count immediately?
 - Answer: No.

Art. 18/19 – TIME-OUT/SUBSTITUTION

- A time-out cannot be granted before the playing time for a period has started or after the playing time for a period has ended.
- A substitution cannot be granted before the playing time for the first period has started or after the playing time for the game has ended. Any substitution can be granted during intervals of play.

Art. 18/19 – TIME-OUT/SUBSTITUTION

- At approximately the same time when the game clock signal sounds for the end of a quarter or extra period a foul is called and A4 is awarded two (2) free throws. Either coach requests:
 - (a) A time-out.
 - (b) A substitution.
- **Interpretation:**
 - (a) A time-out cannot be granted because the playing time for a period or extra period has ended.
 - (b) A substitution can be granted only after the free-throw attempts have been completed and the interval of play for the next period or extra period has begun.

Art. 18/19 – TIME-OUT/SUBSTITUTION

- **Example:**
 - After the ball has left the hands of the referee on the jump ball but before the ball is legally tapped, jumper A5 commits a violation and the ball is awarded to team B for a throw-in. At this moment either coach requests a time-out or a substitution.
- **Interpretation:**
 - Despite the fact that the game has already started the time-out or substitution shall not be granted because the game clock has not yet started.

Art. 28.1.2 - BALL IN THE FRONT COURT

- **Non Dribbler** - The ball touches or is legally touched by an offensive player who has both feet completely in contact with his/her frontcourt – FIBA Interpretation

BALL IN THE FRONT COURT

- **Question 8:**
 - A1 who is straddling the mid-court line receives a pass from A2 from Team A's backcourt. A1 passes the ball back to A2 who is still in Team A's backcourt. Is this legal?
 - Answer: Yes.

BALL IN THE FRONT COURT

- **Question 9:**
 - A1 who is straddling the mid-court line receives a pass from A2 from Team A's backcourt. A1 pivots into Team A's backcourt. Is this a violation?
 - Answer: No.

BALL IN THE FRONT COURT

- **Question 10:**
 - A1 who is straddling the mid-court line receives a pass from A2 from Team A's backcourt. A1 while still straddling the line dribbles the ball. Is this legal?
 - Answer: Yes.

BALL IN THE FRONT COURT

- **Question 11:**
 - A1 who is straddling the mid-court line receives a pass from A2 from Team A's backcourt. A1 then passes to A3 who is also straddling the mid-court line. Is this legal?
 - Answer: Yes.

BALL IN THE FRONT COURT

■ Question 12:

- A1 who is straddling the mid-court line receives a pass from A2 from Team A's backcourt. A1 then passes to A3 who jumps from Team A's front court, catches A1's pass while airborne and lands straddling the mid-court line. Is this a violation?
- Answer: Yes.

Art. 29.1.1 - 24-SECOND RULE

- On a throw-in, the shot clock starts as soon as the ball touches or is touched by any player on the playing surface and the team taking the throw-in remains in control of the ball.

24-SECOND RULE

■ Question 13:

- After a Team B basket, A1's throw-in pass is deflected by B1 and then deflected by A2. While no player has gained control of the ball on the court, should the 24-second device be started?
- Answer: Yes.

Art. 29.2.1 - 24-SECOND RULE

If the game is **stopped** by an official:

- For a foul or violation (not for the ball having gone out-of-bounds) by the team not in control of the ball,
- For any valid reason by the team not in control of the ball,
- For any valid reason not connected with either team,
- Possession of the ball shall be awarded to the same team that previously had control of the ball.

24-SECOND RULE (CONTINUED)

- If the throw-in is administered in the backcourt, the twenty-four (24) second clock shall be reset to twenty-four (24) seconds.
 - If the throw-in is administered in the frontcourt, the twenty-four (24) second clock shall be reset as follows:
- If fourteen (14) seconds or more is displayed on the shot clock at the time when the game was stopped, the shot clock shall not be reset, but shall continue from the time it was stopped.
- If thirteen (13) seconds or less is displayed on the shot clock at the time when the game was stopped, the shot clock shall be reset to fourteen (14) seconds.

24-SECOND RULE (CONTINUED)

■ Question 14:

- With 1:45 left to play in the fourth period, A1 is dribbling the ball in Team A's backcourt for 5 seconds when B1 deliberately deflects the ball with his foot? The shot clock shows 19 seconds. Team A is granted a time-out. When play resumes with a Team A throw-in at the throw-in line, shall the shot clock be reset to 24?
- Answer: No.

24-SECOND RULE (CONTINUED)

■ Question 15:

- A1 is dribbling the ball in Team A's frontcourt when B1 fouls A1? The shot clock shows 18 seconds. When play resumes with a Team A throw-in, shall the shot clock be reset to 24?
- Answer: No.

24-SECOND RULE (CONTINUED)

■ Question 16:

- A1 is dribbling the ball in Team A's frontcourt when B1 deflects the ball which goes out of bounds in Team A's backcourt? The shot clock shows 10 seconds. When play resumes with a Team A throw-in, shall the shot clock be reset to 24?
- Answer: No.

24-SECOND RULE (CONTINUED)

■ Question 17:

- A1 is dribbling the ball in Team A's frontcourt when play is stopped because of an injury to A2. The shot clock shows 10 seconds. When play resumes with a Team A throw-in, shall the shot clock be reset to 14?
- Answer: No.

24-SECOND RULE (CONTINUED)

■ Question 17a:

- A1 is dribbling the ball in Team A's frontcourt when play is stopped because of an injury to B2. The shot clock shows 10 seconds. When play resumes with a Team A throw-in, shall the shot clock be reset to 14?
- Answer: Yes.

24-SECOND RULE (CONTINUED)

■ Interpretation:

- During A2's frontcourt throw-in, B4 places his arms over the boundary line and blocks A4's pass with
 - (a) nineteen (19) seconds
 - (b) eleven (11) seconds
- remaining on the twenty-four (24) second clock.
- B4's violation. After the throw-in in the frontcourt team A shall have
 - (a) nineteen (19) seconds
 - (b) fourteen (14) seconds
- remaining on the twenty-four (24) second clock.

24-SECOND RULE (CONTINUED)

■ Question 18:

- A1 is dribbling the ball in Team A's backcourt when B2 commits an unsportsmanlike foul on A2. The shot clock shows 19 seconds. When play resumes with a Team A throw-in straddling the mid-court line after A2's free throws, shall the shot clock be reset to 24?
- Answer: Yes.

24-SECOND RULE (CONTINUED)

■ Question 19:

- With Team A in control of the ball and 5 seconds left on the shot clock, A1 and B1 are called for a double foul in Team B's restricted area? When play resumes with a Team A throw-in in Team A's front court, shall the shot clock be reset to 14?
- Answer: No.

Art. 36 (Interp.) - UNSPORTSMANLIKE FOUL

- During the last two (2) minutes of the fourth quarter and during the last two (2) minutes of each extra period, the ball is out-of-bounds for a throw-in and still in the hands of the official or already at the disposal of the player taking the throw-in. If at this moment a defensive player on the playing court causes contact with a player of the offensive team on the playing court and a foul is called, it is an unsportsmanlike foul.

UNSPORTSMANLIKE FOUL

■ Question 20:

- With 1:29 to play in the second quarter, the ball is out-of-bounds at the disposal of A1 for a throw-in. At this moment, B2 causes contact with A2 and a foul is called. Shall the foul be judged unsportsmanlike?
- Answer: No.

FREE THROW VIOLATIONS

- **DELETED** in 2010 rules: Any other player's violation, which occurs immediately before at approximately the same time as, or after the violation committed by the free-throw shooter, shall be disregarded.

FREE THROW VIOLATIONS

■ Question 21:

- B1 violates on A1's last free throw by entering the lane too soon. A1's throw misses the rim. The official gives the ball to the team that was to receive the next AP throw in. Is this correct?
- Answer: Yes.

TIME-OUT

Each time-out shall last one (1) minute. Teams must promptly return to the playing court after the official blows his whistle and beckons the teams on the playing court. Sometimes a team extends the time-out beyond the allotted one (1) minute, gaining an advantage by extending the time-outs and causing also a delay of the game. A warning to that team shall be given by an official. If that team does not respond to the warning, an additional time-out shall be charged against the offending team. If the team has no time-outs remaining, a technical foul for delaying the game may be charged against the coach, recorded as 'C'.

TIME-OUT

Example:

The time-out period expires and the official beckons team A back on the playing court. The coach A continues to instruct his team which still remains in the team bench area. The official re-beckons team A on the playing court and

- (a) Team A comes finally on the playing court
- (b) Team A continues to remain in the team bench area.

Interpretation:

(a) After the team starts to return to the playing court, the official gives a warning the coach that if the same behaviour is repeated an additional time-out will be charged against team A.

(b) A time-out, without warning, will be charged against team A. If team A has no time-out remaining, a technical foul for delaying the game will be charged against coach A, recorded as 'C'.